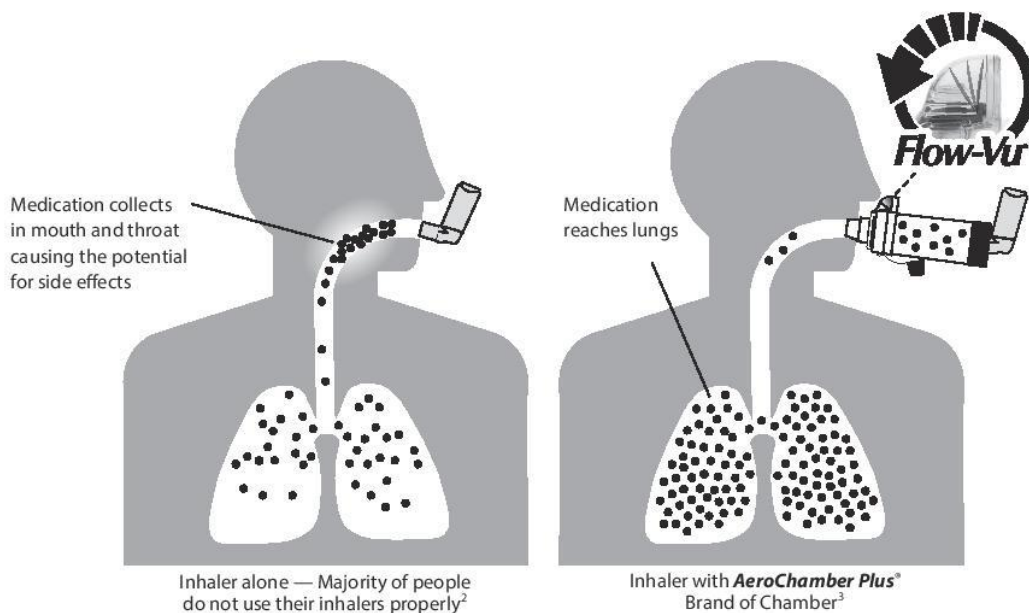
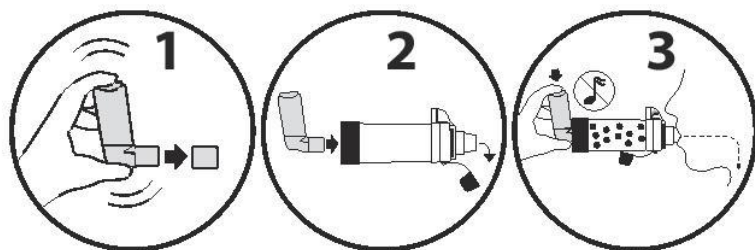


# People who use a valved holding chamber with their inhaler have **better control**.<sup>1</sup>



## Easy as 1-2-3



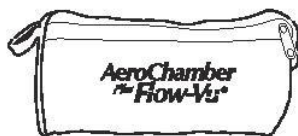
- 1 Shake inhaler and remove cap.
- 2 Insert inhaler into chamber.
- 3 Press inhaler and inhale slowly and deeply, holding your breath for 5 – 10 seconds.  
**OR**  
Press inhaler and breathe in and out through the chamber for 2 – 3 breaths.



Scan for videos



**Insurance coverage may be available. Manual claim submission often required by customer.**



**FREE** Carrying Case<sup>‡</sup> when patients join  
**myAeroChamber.com**  
www.myaerochamber.com

**AeroChamber**  
**Plus Flow-Vu**  
Anti-Static Valved Holding Chamber



Trudell Medical International<sup>†</sup>

aerochamber.com

<sup>1</sup> Levy ML, Hardwell A, McKnight E, Holmes J. Asthma patients' inability to use a pressurized metered-dose inhaler (pMDI) correctly correlates with poor asthma control as defined by the Global Initiative for Asthma (GINA) strategy: a retrospective analysis. *Prim Care Respir J.* 2013;Dec;22(4):406-11. <sup>2</sup> Plaza V, Sanchis J. Medical personnel and patient skill in the use of metered dose inhalers: a multicentric study. *Respiration* 1998;65:195-8. <sup>3</sup> Singh D et al. Effect of **AeroChamber Plus**® on the lung and systemic bioavailability of beclomethasone dipropionate / formoterol pMDI. *British Journal of Clinical Pharmacology* 2011;72(6):932-9. †While supplies last. See website for full details.

MD-024A-0319. © trade-marks and registered trade-marks of Trudell Medical International. © TMI 2019. All rights reserved. \* Ontario registered business name.